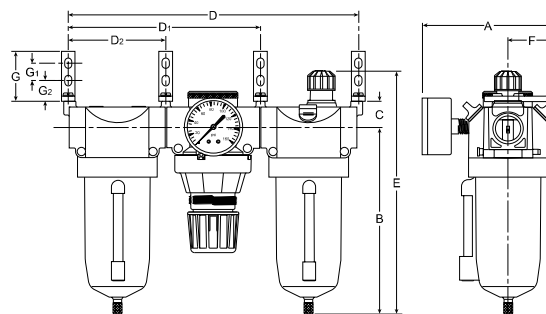
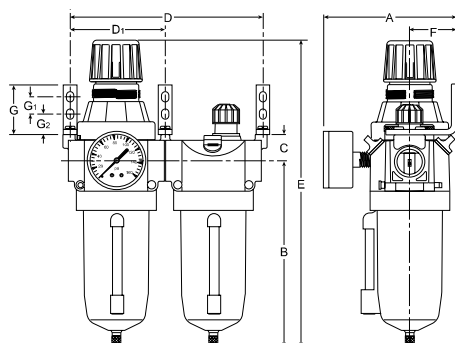
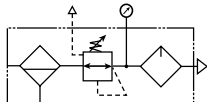


QIX Combinations – C20 / C21 Series

- See individual component pages for details.
- Gauges included on combinations.

Three-Unit Combo



C20-BL



C20-FRL

C20-FRL Dimensions

A	B	C	D*	D**	D ₁
4.78 (121)	6.83 (173)	.96 (24)	10.60 (269)	10.70 (271)	7.13 (181)
D ₂	E	F	G	G ₁	G ₂
3.57 (91)	8.89 (226)	1.69 (43)	1.81 (46)	.75 (19)	.63 (16)

C20-BL Dimensions

A	B	C	D*	D**	D ₁
4.78 (121)	6.83 (173)	.96 (24)	7.31 (186)	7.41 (188)	3.57 (91)
E	F	G	G ₁	G ₂	
11.27 (286)	1.69 (43)	1.81 (46)	.75 (19)	.63 (16)	

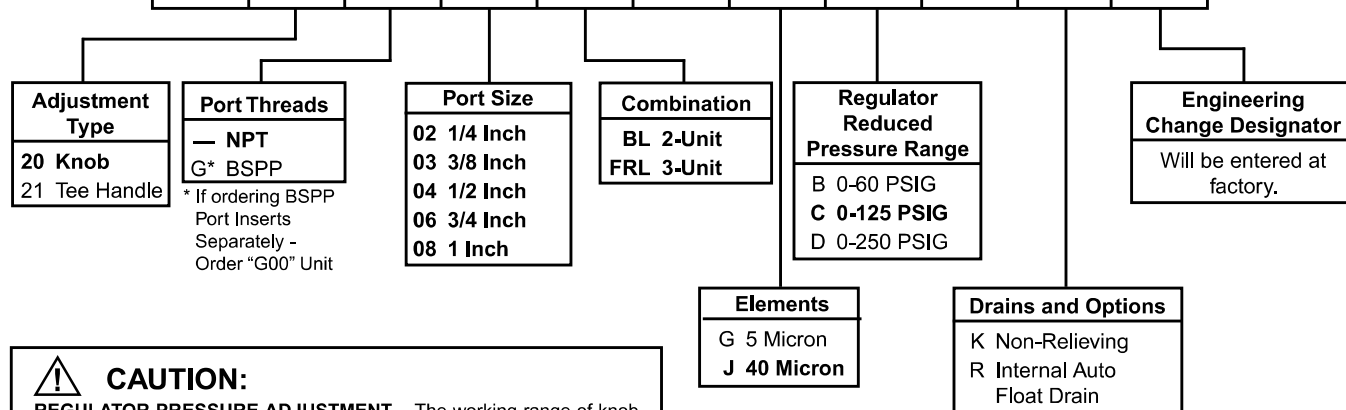
inches (mm)

* 1/4 thru 3/4 Inch Port Insert Size

** 1 Inch Port Insert Size

Ordering Information

C	20	—	02	FRL	W	J	C	W	/**
----------	-----------	----------	-----------	------------	----------	----------	----------	----------	------------



CAUTION:

REGULATOR PRESSURE ADJUSTMENT – The working range of knob adjustment is designed to permit outlet pressures within their full range. Pressure adjustment beyond this range is also possible because the knob is not a limiting device. This is a common characteristic of most industrial regulators, and limiting devices may be obtained only by special design. For best performance, regulated pressure should always be set by increasing the pressure up to the desired setting.

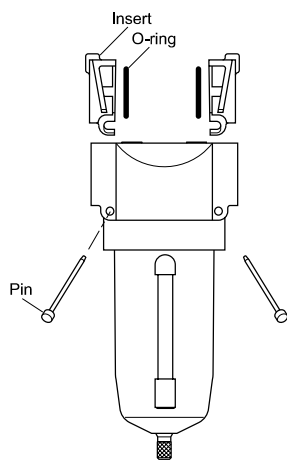
BOLD ITEMS ARE MOST POPULAR.

QIX Accessories

QIX Port Insert Kits & Accessories

Port Insert Kits (includes o-rings & pins) NPT

Port Size	NPT	BSPP
1/4"	IK20Y	IK20YG
3/8"	IK20X	IK20XG
1/2"	IK20A	IK20AG
3/4"	IK20B	IK20BG
1"	IK20C	IK20CG
Combination Connector (connects 2 QIX units together)	IK20CC	IK20CC
Combination Porting Block (same as IK20CC, except with 1/4" top branch outlet)	IK20CP	IK20GCP
IK20CP Porting Block and 1908 Pressure Switch	PST20	—

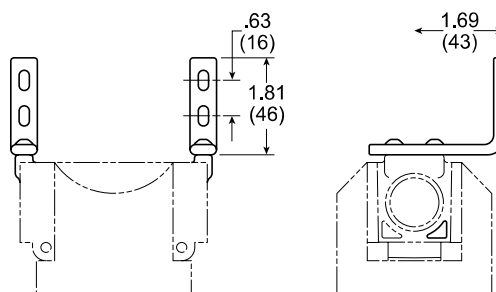


Port Insert Assembly

QIX MK20 Mounting Brackets

Part Number: MK20-0100

Kit contains 2 brackets and 4 screws



QIX IK20V Shut-Off Valve

This modular, 3-way ball valve attaches between the port insert and the inlet side of any QIX component. This valve shuts off the air pressure and vents the downstream pressure through a 1/8" NPTF port in the bottom of the valve.

The valve comes standard with a "lockout" feature as required by OSHA Standard 1910.147

Valve adds 1.4" to width of system.

